

GROUP FOUR (4)
TEAM LAKESIDE

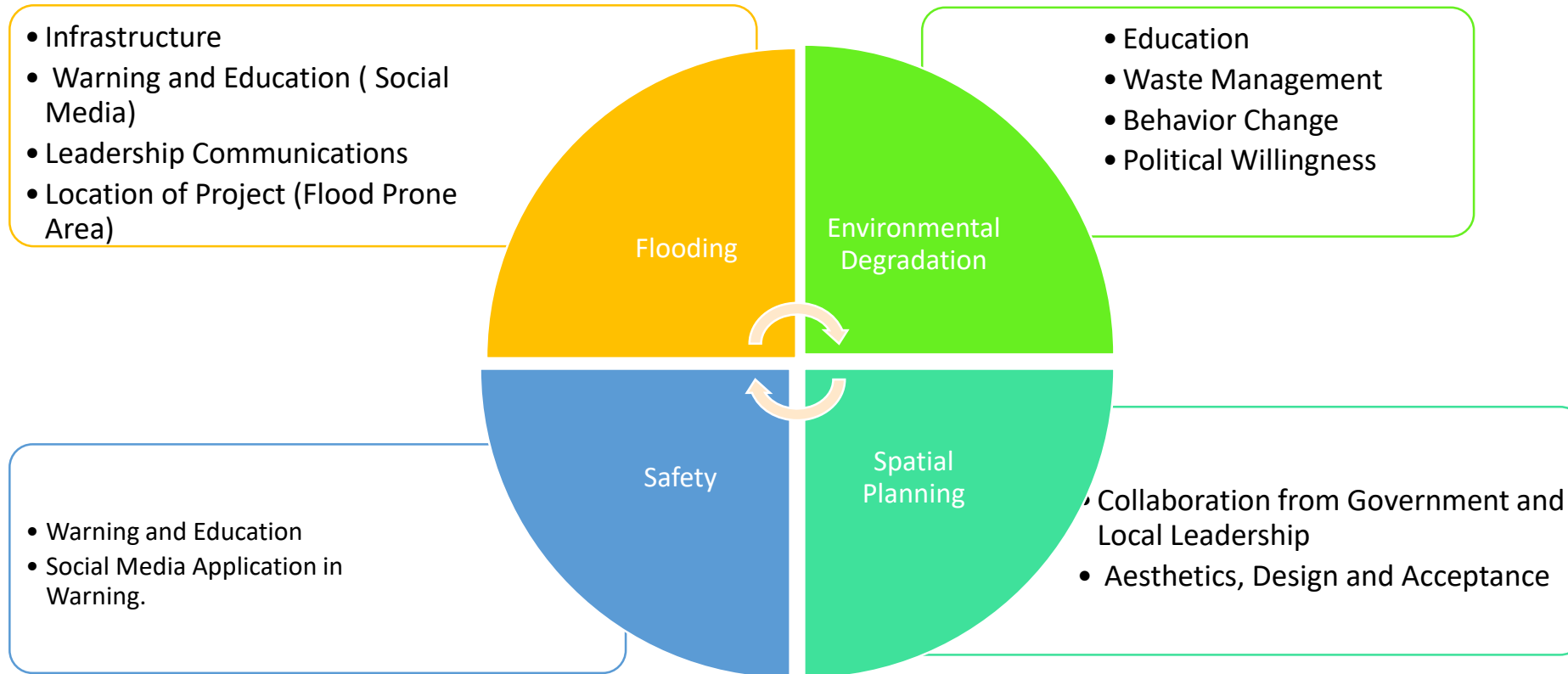
Reporting Back

Summary of research findings and next steps

Summary of completed research

	Laryee	Zenobia	Thierry	Mohammed	Thuvi
Research topic	Flood Management	Assessment of Plastic Debris	Flooding and Media	Shoreline Changes and impact on Recreational Beaches	Model House
Key words	Flooding, Rainfall and Local collaborations	Plastic Debris	Flood Forecast and Validation and Twitter	Shoreline change and Recreational Beaches	Affordable House, Local Material and Simple Construction
Key findings	Poor Infrastructures, Community Leadership, and Land planning	760 pcs plastic, More plastic unmanaged parts than Managed parts	Flood Risk rarely communicated in Newspaper, Social media use differs between countries	Poor management of the beaches and Erosion	Wooden Element Construction, Shadow, Comparison of Different Area
SDGs	SDGs 3 & 6	SDGs 6 & 14	SDGs 3, 6, 8, 11, 13	SDGs 14 & 9	SDGs 6 & 11 ²

Common topics linking your research



Some questions to consider:

- How could another student's research enhance yours? i.e. modeling tools, data, innovations, etc...
- How could a local perspective enhance your research findings?
- How will future conditions affect your research conclusions (climate change impacts, population growth, etc)

Practical projects that could be based on your common topics

Project 1

- Social Media for Change

Project 2

- Comprehensive Model Housing

These projects will be further discussed during the afternoon session and at the November meeting in Switzerland